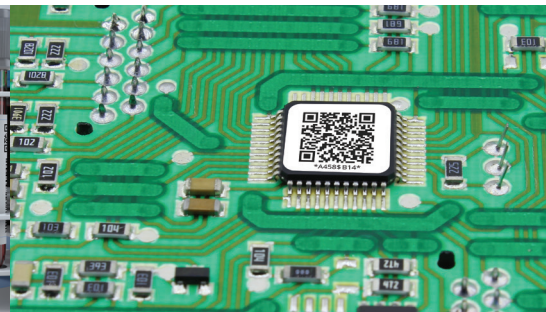
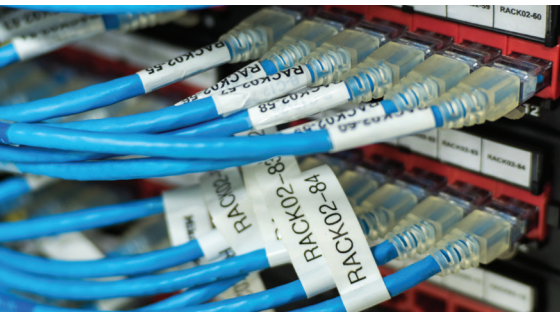


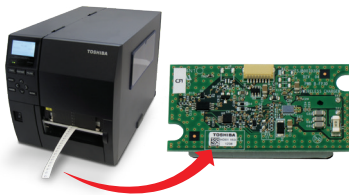
TOSHIBA

> B-EX4T3

- > Industrial 4" High Resolution Thermal Label Printer
- > Flat Head 600 dpi
- > Designed for Small High Resolution Labeling
- > Precise Placement of Barcode/ Data on Small Labels



> B-EX4T3



KEY SELLING FEATURES

Distinctive Best in Class printer designed to print small high-quality labels

- Faultless execution with tight registration from first label to last
- Ensure printing and scannable labels with small fonts, compact 2D barcodes
- Satisfy Pharmaceutical, Medical instruments, Electronic components, and additional small labeling requirements

High resolution with extreme Precision

- Accommodate printing on small labels required in special applications
- Print Label size as small as .51" W x .12" H
- Center Alignment minimize media drift and ensure accurate placement of barcode/data
- 600 dpi resolution optimize scannable data and barcode on small labels

Low TCO (Total Cost of Operation)

- Long-Lasting Print head backed by 1 million inches warranty
- Dual Ribbon Motor System
 - Ensures better ribbon handling
 - Eliminates ribbon wrinkling or unusable, unscannable labels
- Precise label alignment ensures usable labels and eliminate waste

Ease of Use and Maintenance

- Easy ribbon and media loading
- Easy to service and maintenance

Flexibility

- User installable snap-in print head
- Versatile options, high precision peel module, cutter and Expansion I/O

business.toshiba.com

STANDARD FEATURES

- > Rugged metal frame
- > Flat head design
- > Thermal transfer
- > Models in 600 dpi
- > 32MB DRAM, 16MB Flash
- > Dual ribbon motor
- > Ribbon capacity 300 meter
- > Maximum speed – 6 ips
- > TPCL (Toshiba Print Command Language)
- > Long head life – 1 million linear inches

| | |
|--------------------------------------|--|
| Models | B-EX4T3 |
| Head Type | Flat |
| Printer Specification | <p>Technology Resolution Print Speed (Max) Memory - SRAM Memory - FROM Print Length (Min-Max) Batch Cut Peel Print Width (Min-Max) Media sensor Minimum label size Minimum Printable Area</p> <p>Thermal Transfer 600 dpi (23.6 dots/mm) 6 ips (152mm/sec) 32MB 16MB .07" - 19.6" (1.8mm - 497mm) .07" - 19.5" (1.8mm - 496mm) .07" - 10.0" (1.8mm - 253mm) .45" - 4.09" (11.4mm - 104mm) Reflective, Transmissive (Adjustable) .51" W x .12" H (12mm - 3mm) .45" W x .07" H (11.4mm - 1.8mm)</p> |
| Media | <p>Media Type Media Alignment Media Width with liner (Min-Max) Label Width without liner (Min - Max) Label Length (Min - Max) Label Pitch (Min - Max) Media Thickness - Label Media Inner Core Diameter (Max) Media Outer Roll Diameter (Max) Approved Media substrate</p> <p>Roll, Fanfold Center (Auto) .98" - 4.33" (25mm - 110mm) .51" - 4.25" (13mm - 108mm) .12" - 19.6" (3mm - 498mm) Batch Mode .12" - 10.0" (3mm - 254mm) Peel Mode .12" - 19.5" (3mm - 497mm) Cut Mode .20" - 19.7" (5mm - 500mm) Batch Mode .20" - 10.0" (5mm - 256mm) Peel Mode 1.0" - 19.7" (25mm - 500mm) Cut Mode .005" - .007" (13mm - .17mm) 3" (76.2 mm) 8" (203.2 mm) PET film <small>*All other synthetic face stocks need testing before purchase</small></p> |
| Ribbon | <p>Ribbon Type Ribbon Length (Max) Ribbon Core Diameter Ribbon Outer Diameter Ribbon Winding</p> <p>Resin 300M 1" (25mm) 2.71" (70.0mm) CSO (Coated Side Out)</p> |
| Programming Language Standard | TPCL (Toshiba Print Command Language) |
| Interface | <p>Standard Optional</p> <p>RS232, USB, Ethernet Parallel</p> |
| Accessories Options | <p>Cutter High Precision Peel module Real Time Clock Expansion I/O Card</p> |
| Barcode Symbolologies | <p>Linear Bar Codes 2 Dimensional Bar Codes</p> <p>JAN8, JAN13, EAN8, EAN8+2 digits, EAN8+5 digits, EAN13, EAN13+2 digits, EAN13+5 digits, UPC-E, UPC-E+2 digits, UPC-E+5 digits, UPC-A, UPC-A+2 digits, UPC-A+5 digits, MSI, ITF, NW-7, CODE39, CODE93, CODE128, EAN128, Industrial 2 to 5, Customer Bar Code, POSTNET, KIX CODE, RM4SCC (ROYAL MAIL 4 STATE CUSTOMER CODE), GSI DataBar Data Matrix, PDF 417, Maxicode, QR Code, Micro PDR 417, CP Code</p> |
| Environmental | <p>Operating Temperature Operating Humidity</p> <p>40° F - 104° F (5° C - 40° C) 25 - 85% RH (non-condensing)</p> |
| Power consumption | <p>Printing Mode Sleep Mode Stand-By Mode Dimensions (WxHxD) Weight Weight Shipping</p> <p>116W, 059A 5.7W, .09A 15W or less 10.9" x 12.2" x 18.1" (278mm x 310mm x 460mm) 36.7 lbs./17 kg 41.9 lbs./19 kg</p> |

