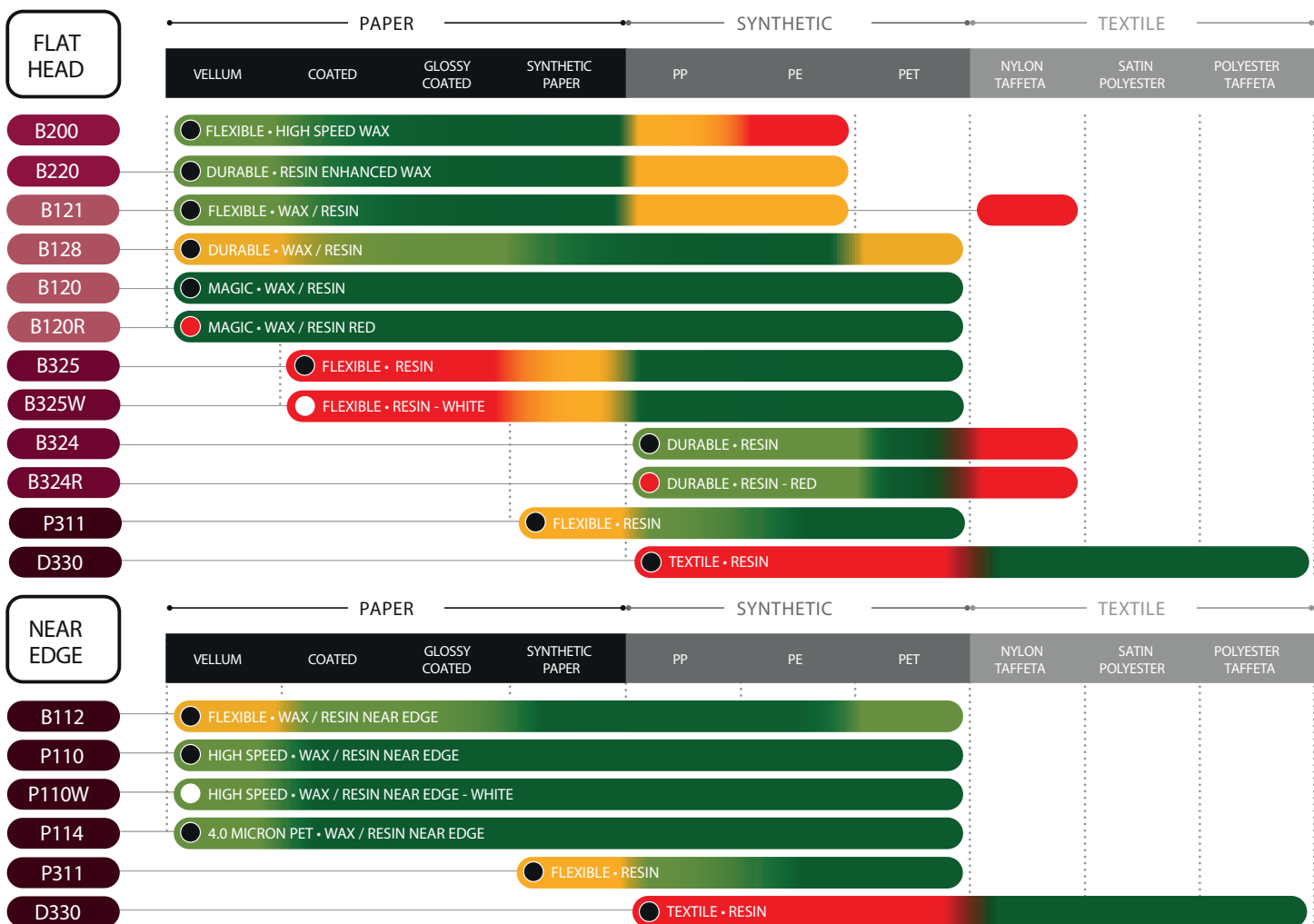


# THERMAL TRANSFER RIBBON APPLICATION GUIDELINES

LOW ..... SUBSTRATE COMPATIBILITY ..... HIGH

**FLEXIBLE** Prints on a wide variety of substrates  
**DURABLE** Smudge, abrasion and chemical resistance  
**MAGIC** Unique for wide variety of substrates it can print and the amazing resistance it can show



## RIBBON SOLUTIONS FOR ALL APPLICATIONS

**B 200**  
FLEXIBLE

W<sup>WAX</sup> FH

B200 is suitable for coated and uncoated paper and tag stocks, as well as some synthetic applications. Performing as a reliable solution for higher speed printing applications where print flexibility is key.

**B 220**  
DURABLE

W<sup>WAX</sup> FH

B220 Resin Enhanced Wax is the perfect solution for general purpose labeling on a broad range of media. B220 requires less heat, prints fast, and is FDA compliant for Direct Food Contact.

**B 121**  
FLEXIBLE

WR<sup>WAX RESIN</sup> FH

B121 Flexible wax/resin ribbon is designed to give outstanding print density on the widest range of label materials at high speed while using minimal printhead energy. B121 is FDA compliant for Direct Food Contact.

**B 128**  
DURABLE

WR<sup>WAX RESIN</sup> FH

B128 Durable wax/resin offers excellent printability, IPA resistance, plus strong abrasion and environmental resistance. B128 is FDA compliant for Direct Food Contact.

**B 120**  
MAGIC

WR<sup>WAX RESIN</sup> FH

B120 Magic wax/resin is our most durable ribbon in the midrange category. Excellent printability, IPA resistance and extreme durability in applications demanding the ultimate wax/resin. B120 is B55609 certified for GHS applications.

**B 120R**  
MAGIC

WR<sup>WAX RESIN</sup> FH

B120 R Magic wax/resin offers perfect red printing using B120's exact same print settings, and sharing the same benefits, credentials and characteristics.

**B 325**  
FLEXIBLE

R<sup>RESIN</sup> FH

B325 Flexible resin, ideal for wide array of synthetic materials, with chemical resistance, superior adherence and good durability. B55609 certified for GHS apps.

**B 325W**  
FLEXIBLE

R<sup>RESIN</sup> FH

B325W Flexible resin offers high opacity white printing sharing B325's benefits, credentials and characteristics.

**B 324**  
DURABLE

R<sup>RESIN</sup> FH

Resin is UL and c-UL recognized; ultimate solution for extreme environments where chemical resistance is needed; demanding applications in a wide range of high end markets like auto and electr. B55609 certified for GHS apps.

**B 324R**  
DURABLE

R<sup>RESIN</sup> FH

B324R Resin offers perfect red printing using B324's exact same print settings, and sharing the same benefits, credentials and characteristics

**B 112**  
FLEXIBLE

WR<sup>WAX RESIN</sup> NE

B112 is multi-purpose with versatile characteristics allowing it to cover most standard applications. Equally able to print onto labels and flexible film.

**P110**  
HIGH SPEED

WR<sup>WAX RESIN</sup> NE

P110 is a super high speed near edge wax/resin developed especially for printing on flexible packaging film. P110 prints fast, and works on multiple substrates. FDA compliant for Direct Food Contact.

**P110W**  
HIGH SPEED

WR<sup>WAX RESIN</sup> NE

P110W near edge wax/resin offers extreme opacity white printing while sharing all of P110's benefits, credentials and characteristics.

**P 114**  
4.0 MICRON PET

WR<sup>WAX RESIN</sup> NE

P114 is a 4.0 micron PET specifically designed for in-line packaging and print applications where speed is critical. This extremely flexible ribbon offers optimum performance in high volume, just-in-time printing. With a 12% thinner PET, P114 contributes to plastic reduction.

**P311**  
FLEXIBLE

R<sup>RESIN</sup> NE

P311 is a high speed near edge resin able to also perform in flat head equipment, with exceptional durability to abrasion and heat resistance for the most demanding applications. Suited to smooth synthetic surfaces, for crisp clean print definition.

**D330**  
TEXTILE

R<sup>RESIN</sup> FH

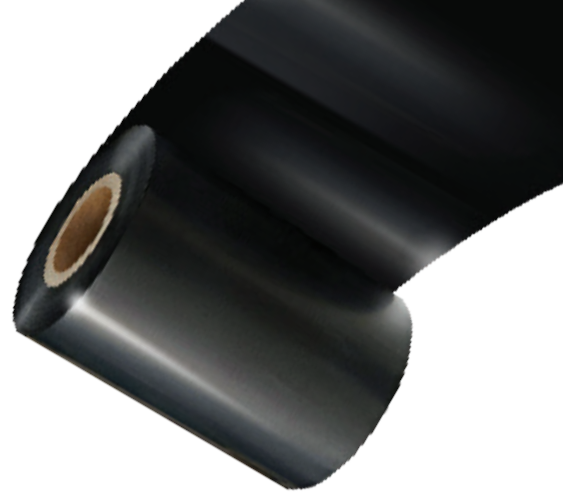
D330 textile resin is compatible with both flat head / near edge and offers superior laundry resistance. With a wide application window, it delivers crisp black print on Nylon and Polyester labels.



AMER 40 E Newberry Rd, Bloomfield, CT 06002  
AMER.TTR@ITWShineMark.com

EMEA Vitruvius Way, Meridian Business Park  
Leicester, LE19 1WA, UK  
EMEA.INFO@ITWShineMark.com

APAC 112 Seonggeo-gil, Seonggeo-eup,  
Seobuk-Gu, Chonan-si,  
Chungchongnam-Do, Korea 31044  
WORLD.INFO@ITWShineMark.com



## INDUSTRY RIBBONS REFERENCE CHART

	ITW	DNP	iimak	Armor	Ricoh	TodayTec	IMP	AEBO	Markem	VideoJet
<b>LOW COST WAX</b>	B200	TR4035	SW200	AWR1 AWR6 AWR8	-	TDW101	Z-107	S10 S11	5100 5101	-
<b>STANDARD WAX</b>	B220	TR4055	-	AWR470	-	-	Z-102	-	3100 3101	-
<b>RESIN ENHANCED WAX</b>	B220	4085 Plus 5080	HighMark GP725	AWX FH	-	TDW121	Z-9085	-	4100 3101	-
<b>WAX/RESIN</b>	B121 B120 B128	TRX50 M260 TRX55	- PM308 Primemark	- APR6 APXFH+	B120A B120E B110A	TDM200 - TDM231	Z-201 - Z-203	- - -	4210/4211 - -	- - -
<b>COLOR WAX/RESIN</b>	B120R	-	DC200	AWR8 Colors	B210 B610	-	-	-	3210 Series	-
<b>NEAR EDGE WAX/RESIN</b>	B112	TR4500	Netmark IQ	APR600	B120E B130EV	-	Z-211	-	3811	-
<b>NEAR EDGE HIGH SPEED WAX/RESIN</b>	P110	M295+	NETFlex+	APR600 APX650	B1130ED	-	-	-	3110 SD1 3810 & 3510 3710	Standard, Super Standard & Ultra
<b>COLOR NEAR EDGE WAX/RESIN</b>	P110W	M295C	NETColor	APR Colors	-	-	-	-	3210 SD1 3410 & 7810 (Silver White)	Yes Standard
<b>NEAR EDGE RESIN</b>	P310	R390 R396	Net Resin IQ	AXR600 AXR900 AXR800	-	-	Z-213	-	3110 SD1 3910 (3901 & 3821 Resin For 8018 Printer only)	Premium & Extra Temp
<b>RESIN</b>	B324 B325 B813 B814	R510, TR4070 R300, R316 R510 R510	SP575 SP330 SP575 SP575	AXR1, AXR8 AXR7+ AXR8 AXR8	B110CR, B120EC B110C, B120H B110CU	TDR331	Z-302 Z-303	- - - -	3310/3311 - - -	- - - -
<b>TEXTILE RESIN</b>	D321	R350	SP500	AXR9	D110A	-	-	-	-	-
<b>COLOR RESIN</b>	B324R B325W	510C	DC400	AXR Colors	D210 D310 RFR-W	-	-	-	YES	YES