

# MPERIA® FIBER/ FIBER FILM LASER

EXCEPTIONAL RELIABILITY, MARK  
PERMANENCE AND SUSTAINABILITY

PRODUCT IDENTIFICATION  
EXPERTISE YOU RELY ON.



**PALCO**

Industrial Marking and Labeling, Inc.  
[www.palcosys.com](http://www.palcosys.com)

# HIGH CONTRAST, ULTRA-RELIABLE MARKING FOR YOUR PRODUCTION LINE

Fiber and Fiber Film lasers have exceptional beam quality and focal range, which means you get superior precision in your mark — even in high-speed production lines. Improve uptime, gain full traceability, and advance sustainability goals with a consumable free system that's superior to other making technology.

Fiber and Fiber Film lasers offer incredibly crisp, permanent marks on your metals (steel/aluminum/copper), plastic and flexible films, PVC, plastics (HPDE/LPDE), and more.

A compact design and flexible options allows the laser to adapt to your production line, and dual-processing ensures incredibly accurate marks at the speed of your line.



## EXCEPTIONAL MARKING & CODING

- 99.9% uptime
- No consumables to replace
- Minimal maintenance to perform

## UNMATCHED PERFORMANCE

- Laser sharp marking with VCS (Vibration Correction System)
- Unparalleled precision and permanency regardless of handling
- Consumable-free sustainability

## TRUE SCALABILITY

- Easily add lasers without adding controllers
- Seamlessly integrate verification/validation without middleware
- Reduce complexity with a single interface controlling all marking technology



# INTRODUCING MPERIA®, A TRULY UNIVERSAL CONTROLLER

- Eliminate human error and rework; message and code automation all handled through an intuitive interface
- Grows with your business; whether adding more production lines or multiple plant locations
- Reduce complexity by removing unneeded middleware and 3rd party providers
- Achieve next level productivity; seamlessly connect to your business systems



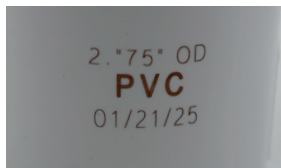
## MPERIA® FIBER & FIBER FILM LASERS

**MPERIA® Fiber and Fiber Film Lasers meet your low-and-high speed, permanent marking requirements offering a choice of wattages and IP ratings that suit your production environment.**

### MPERIA® FIBER & FIBER FILM LASER ADVANTAGE: THE CLEAR EDGE



Aluminum mark



PVC pipe mark



Aluminum beverage can mark



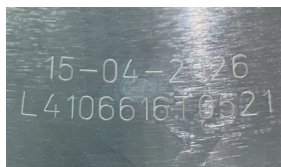
Foil candy wrapper mark



Tetrapak mark



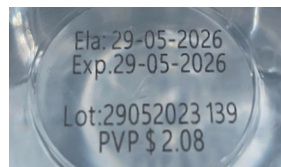
Galvanized steel mark



Bottom of aluminum beverage can mark



2D mark on metal part



PET mark



20W Fiber DE/WD



50W Fiber DE/WD



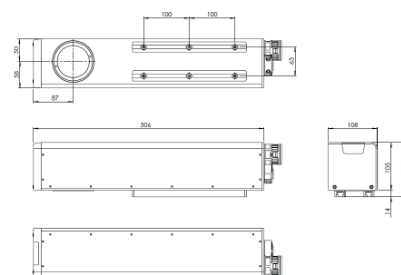
100W Fiber DE/WD



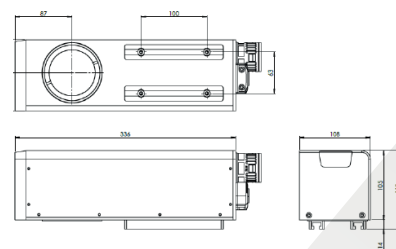
50W Fiber Film DE/WD

## MPERIA® LASER SPECIFICATIONS

LASER	20W FIBER, DE	20W FIBER, WE	50W FIBER, DE	50W FIBER, WE	100W FIBER, DE	100W FIBER, WE	50W FIBER FILM, DE	50W FIBER FILM, WD
WAVELENGTH	1,064 nm							
COOLING	Air (SE, DE)/ Forced Air (WD)							
CONFIGURABLE	Yes							
MAIN SUPPLY	110/240 V AC							
DIMENSIONS (AxBxC)	108x105x506 mm						108x105x336 mm	
WEIGHT	32 kg						30 kg	
SYSTEM	Ytterbium Pulsed Fiber Laser							
MARKING FIELD	60x60, 100x100, 107x107, 160x160, 212x212, 242x242, 325x325, 560x560							
MARKING HEAD	XQS						UHS	
MARKING HEAD ACCESSORIES	Beam Exit at 90°: Standard							
	Focal Distance Indicator: Optional							
	Marking Area Indicator: Standard							
ACCESSORIES/ OPTIONS	Diode Marking Pointer/ Encoder Kit / Mounting Support / Photocell Kit							
APPLICABLE CERTIFICATIONS	CE, EAC, UL, UKCA							
ENVIRONMENTAL CONDITIONS	Operating Temperatures		10° C (50° F) to 40° C (104° F)					
	Humidity		10% < H < 95%, non-condensing					
	Protection Rate		DE (Dusty Environment) IP54, IP55					
			WD (Wash-Down Environment) IP65					



Fiber 20W, 50W, 100W Dimensions.



Fiber Film 50W Dimensions.