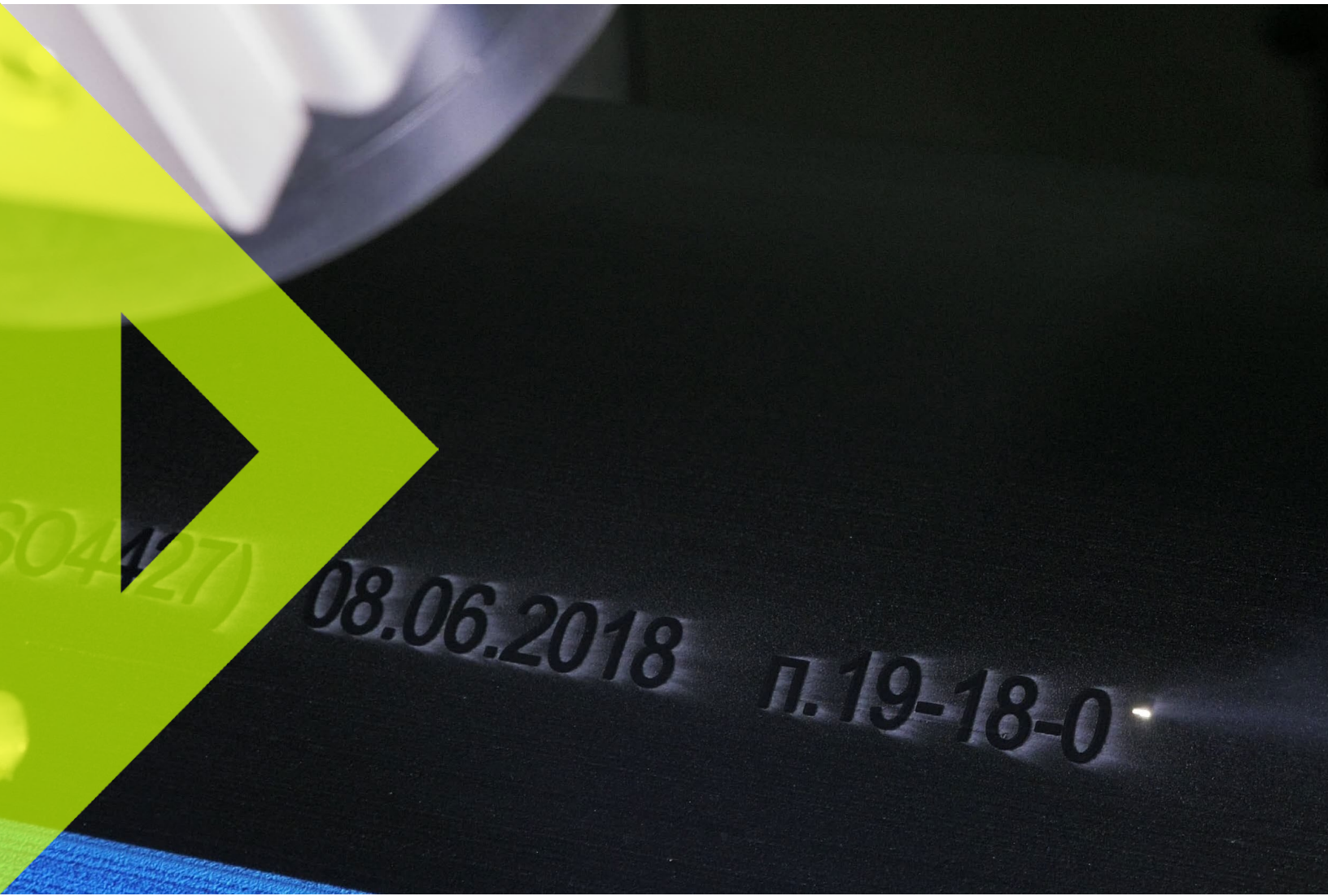


MPERIA® Laser

CO2 LASER SYSTEMS POWERED BY MPERIA®

Unmatched Performance, Reliability, and Sustainability



CONSISTENT, RELIABLE MARKING FOR YOUR PRODUCTION LINE. Clear, sharp, and permanent marking at high speeds improves uptime in the most demanding environments while advancing sustainability goals with a consumable-free system.

MPERIA® CO2 lasers offer incredibly crisp, permanent marks on your coated cardboard, foils, films, plastics (PET/LPDE/HPDE), glass, PVC, and metals. Modularity and flexible options allows the laser to adapt to your environment, and proprietary VCS ensures optimal mark quality even with production line vibration.

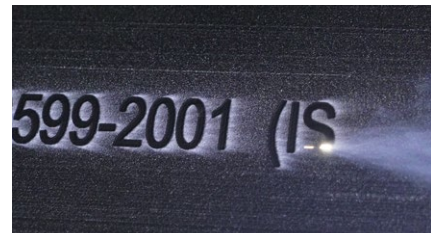
High Performance Coding

- + 99.9% uptime
- + No consumables to replace
- + Minimal maintenance to perform



Unmatched Performance

- + Laser sharp marking with VCS (Vibration Correction System)
- + Unparalleled precision and permanency regardless of handling
- + Sustainable



True Scalability

- + Easily grow from one MPERIA® CO2 Laser on your line to additional MPERIA® Lasers on additional lines all driven by one controller
- + Seamlessly integrate print verification and validation without expensive middleware
- + Prevent integration headaches and complexity with a single interface controlling your MPERIA® Lasers and 3rd party coding technologies



Introducing MPERIA®, A Truly Universal Controller

- + Eliminate human error and rework; message and code automation all handled through an intuitive interface
- + Grows with your business; whether adding more production lines or multiple plant locations
- + Reduce complexity by removing unneeded middleware and 3rd party providers
- + Achieve next level productivity; seamlessly connect to your business systems



MPERIA® CO2 LASERS

MPERIA® CO2 Lasers meet your low-and-high speed, permanent marking requirements offering a choice of wattages and IP ratings that suit your production environment.



MPERIA® Laser 10/30W SD



MPERIA® Laser 10/30W DE

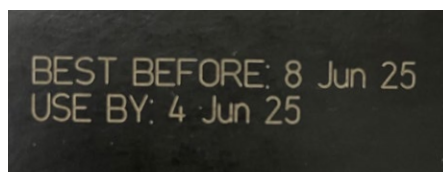


MPERIA® Laser 10/30W WD

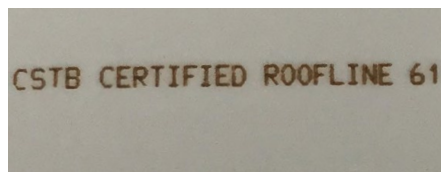


MPERIA® Laser 80W SD, DE, WD

MPERIA CO2 Laser Advantage: The Unmistakable Edge



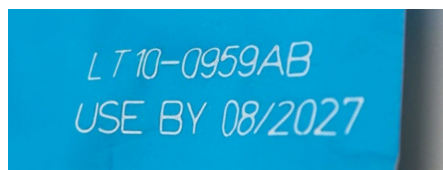
Coated cardboard mark



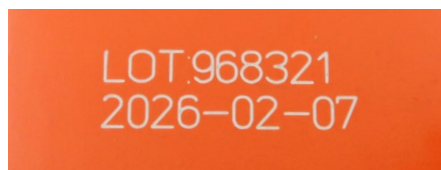
Extruded PVC mark



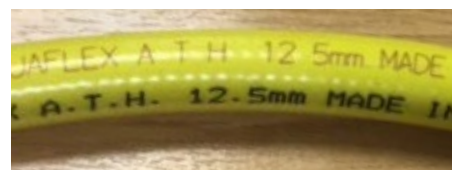
Glass mark



Multi layer foil mark



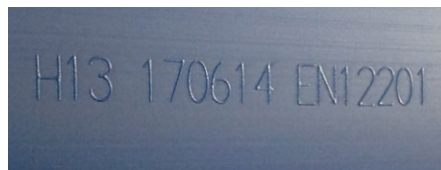
Inked paper board mark



Silicone coated PVC mark



PET bottle mark



Extrusion mark on HDPE



Plastic bottle mark

MPERIA® Laser Specifications

| POWER | 10 WATT (STANDARD) | 30 WATT (STANDARD) | 10/30 WATT (IP54/IP65) | | 80 WATT (IP43/IP54/IP65) | |
|------------------------------|--|--|--|------------|--|------------|
| CONFIGURABLE | No | | Yes | | Yes | |
| WAVELENGTH | | | | | | |
| 10.6 μM | Standard | | Standard | Optional | Optional | |
| 9.3 μM | Not available | | Not available | Optional | Optional | |
| MAIN SUPPLY | 115v/230v, 50/60 hz | | 115v–240v, 50/60 hz | | 110/240 V AC, 50/60 hz | |
| | (1 Phase + N) 300 VA | (1 Phase + N) 600 VA | | | (1 Phase + N) 1900 VA | |
| DIMENSIONS (AxBxC) | 743x216x176 mm | | 740x241x189 mm | | 202x650x525 mm (SE, DE), 350x243x1105 mm (WD W/O ELBOW) | |
| WEIGHT | Net weight: 10 kgs Gross weight: 12 kgs | Net weight: 18,5 kgs Gross weight: 21 kgs | Net weight: 25 kgs Gross weight: 28 kgs | | Net weight: 28 kg (SE, DE), 70 kg (WD) Gross weight: 30 kg (SE, DE), 72 kg (WD) | |
| SYSTEM | Laser, scanners, power supply units, control system | | electronics & CPU in the laser | | CO2 Sealed Tube and Laser Supply Unit with Umbilical | |
| MARKING FIELD | Field size: 60x60 mm (2.36x2.36 in), Working distance: 95 mm, Built in 90° marking | | 40x40 mm | 200x200 mm | 40x40 mm | 200x200 mm |
| | | | 60x60 mm | 250x250 mm | 60x60 mm | 250x250 mm |
| | | | 75x75 mm | 400x400 mm | 75x75 mm | 320x320 mm |
| | | | 100x100 mm | 500x500 mm | 100x100 mm | 500x500 mm |
| | | | 150x150 mm | | 150x150 mm | |
| MARKING HEAD | Co2 sealed laser tube, RF technology | | | | | |
| USER INTERFACE | MPERIA® Controller 8", 12", 15" IP65 | | | | | |
| ACCESSORIES/ OPTIONS | Photocell Kit, Photocell Encoder Kit, Alarm Kit, Fume Extractor, Safety Guard Protection, Floor Mounting Stand, *Diode Pointer (only configurable lasers) | | | | | |
| APPLICABLE CERTIFICATIONS | | | CE, FCC, QPS | | | |
| ENVIRONMENTAL CONDITIONS | 10° C (50° F) to 40° C (104° F) external temperature, Relative humidity <95%, non-condensing, Vibration-free area | | | | | |

Matthews Marking Systems is a global supplier of marking and coding solutions for product identification, branding, and traceability. Our customers trust us to help them achieve increased productivity while driving bottom line improvement with reliable systems for any application. With over 160 years of marking and coding experience, we've established a global reputation as a premier innovator helping customers succeed in industrial and consumer goods packaging industries.